

PREPARED FOR THE U.S. DEPARTMENT OF ENERGY,
UNDER CONTRACT DE-AC02-76CH03073

PPPL-3979
UC-70

PPPL-3979

**2-D Imaging of Electron Temperature
in Tokamak Plasmas**

by

T. Munsat, E. Mazzucato, H. Park, C.W. Domier, M. Johnson,
N.C. Luhmann, Jr., J. Wang, Z. Xia, I.G.J. Classen,
A.J.H. Donné, and M.J. van de Pol

July 2004



**PRINCETON PLASMA PHYSICS LABORATORY
PRINCETON UNIVERSITY, PRINCETON, NEW JERSEY**

PPPL Reports Disclaimer

This report was prepared as an account of work sponsored by an agency of the United States Government. Neither the United States Government nor any agency thereof, nor any of their employees, makes any warranty, express or implied, or assumes any legal liability or responsibility for the accuracy, completeness, or usefulness of any information, apparatus, product, or process disclosed, or represents that its use would not infringe privately owned rights. Reference herein to any specific commercial product, process, or service by trade name, trademark, manufacturer, or otherwise, does not necessarily constitute or imply its endorsement, recommendation, or favoring by the United States Government or any agency thereof. The views and opinions of authors expressed herein do not necessarily state or reflect those of the United States Government or any agency thereof.

Availability

This report is posted on the U.S. Department of Energy's Princeton Plasma Physics Laboratory Publications and Reports web site in Fiscal Year 2004. The home page for PPPL Reports and Publications is: http://www.pppl.gov/pub_report/

DOE and DOE Contractors can obtain copies of this report from:

U.S. Department of Energy
Office of Scientific and Technical Information
DOE Technical Information Services (DTIS)
P.O. Box 62
Oak Ridge, TN 37831

Telephone: (865) 576-8401

Fax: (865) 576-5728

Email: reports@adonis.osti.gov

This report is available to the general public from:

National Technical Information Service
U.S. Department of Commerce
5285 Port Royal Road
Springfield, VA 22161

Telephone: 1-800-553-6847 or
(703) 605-6000

Fax: (703) 321-8547

Internet: <http://www.ntis.gov/ordering.htm>

2-D Imaging of Electron Temperature in Tokamak Plasmas

T. Munsat, E. Mazzucato, H. Park, C.W. Domier, M. Johnson, N.C. Luhmann Jr., J. Wang, Z. Xia, I.G.J.

Classen, A.J.H. Donn e, and M.J. van de Pol

Abstract - By taking advantage of recent developments in millimeter wave imaging technology, an Electron Cyclotron Emission Imaging (ECEI) instrument, capable of simultaneously measuring 128 channels of localized electron temperature over a 2-D map in the poloidal plane, has been developed for the TEXTOR tokamak. Data from the new instrument, detailing the MHD activity associated with a sawtooth crash, is presented.

Electron cyclotron emission (ECE) measurements have been used for several decades to measure electron temperature (T_e) profiles and fluctuations in magnetized toroidal plasmas. In a conventional ECE radiometer, a horn antenna receives the ECE radiation emitted over a wide range of frequencies, which is separated into different frequency bands corresponding to different horizontal plasma locations. Previous efforts to obtain 2-D T_e profiles from ECE measurements have most often invoked the “rigid body” rotation assumption, allowing time variations measured by a 1-D ECE system near the plasma mid-plane to be projected as poloidal variation [1,2]. Additionally, soft X-ray arrays have been used to create 2-D tomographic reconstructions from line-integrated measurements [3]. In this article, data from a new instrument is used to provide directly-measured 2-D T_e maps of MHD behavior resulting from a sawtooth crash at the $q\sim 1$ surface in the TEXTOR tokamak.

In the ECE Imaging (ECEI) technique, the single antenna of a conventional heterodyne ECE radiometer is replaced by a vertically distributed array of antennas/mixers, using large diameter optics to image the ECE emission layer onto the array, thus transforming the 1-D radiometer into a 2-D imaging instrument. The TEXTOR instrument uses a wide-band intermediate frequency scheme for each of 16

antennas, enabling simultaneous detection of 8 frequencies distributed over ~ 4 GHz for a total of 128 channels. The spatial resolution of the instrument is ~ 1 cm in both the radial and vertical directions. Further details of the ECEI approach and the TEXTOR instrument in particular can be found in Refs. [4,5].

Since the first observation of sawtooth phenomena using soft x-ray emission, the general physical mechanism of sawteeth has come to be relatively well understood [6,7]. The details of the physical magnetic reconnection process are still unresolved, however, and require 2-D measurements of T_e and plasma current (I_p) to fully understand. Some of the primary outstanding issues include whether the reconnection process is partial or full, and whether the sawtooth crash is due to ballooning or kink modes.

Figures 1 and 2 show a sequence of images from the TEXTOR ECEI system, recorded near the $q \sim 1$ surface, for timeslices ranging through the sawtooth crash cycle (TEXTOR shot 94568). The plasma conditions were as follows: $I_p = 400$ kA, $B_T = 2.3$ T, $n_e(0) = 4 \times 10^{19} \text{ m}^{-3}$, and $T_e(0) \sim 1$ keV. The relative temperature oscillation for each channel was determined by normalizing to the time-averaged measured signal level (proportional to the local electron temperature). Each of the 128 waveforms was low-pass filtered at 10 kHz. In each image frame, an estimate of the inversion layer is indicated by a double black curve. This estimate is based solely on the ECEI measurements, without corroboration from a separate current profile measurement.

Typically in a TEXTOR sawtooth crash, there is a short precursor phase, exhibiting a “hot-spot” which rotates through the ECEI field of view several times before eventually breaking through the $q \sim 1$ surface at the crash. The break-through of the hot region appears to be poloidally localized, in the plane-of-view of the ECEI instrument, but occurs at an arbitrary poloidal location for each sawtooth event. This includes cases where the break-through point is out of view of the ECEI system. A likely explanation for these observations is that the heat ejection occurs locally in the vicinity of a single helical field line, which has an arbitrary toroidal phase (relative to the ECEI system) at the crash time. The arbitrary toroidal phase

appears as an arbitrary poloidal phase when viewed by the fixed ECEI instrument.

In the sequence shown in Fig. 1, the “hot-spot” appears to break through the inversion layer at the lower-right corner of the field of view. As can be seen in the figure, the ejection of heat through the inversion layer appears to be quite localized, until a symmetric equilibrium is restored at the end of the crash.

Figure 2 shows a similar sequence, but for a sawtooth event in which the hot spot breaks through the inversion layer slightly above the outer midplane, allowing a better observation of the heat ejection within the ECEI view.

With the addition of current-profile diagnostics and an expanded set of ECEI data from TEXTOR, these images can help to enhance our understanding of the $m=1$ oscillation and sawtooth crash, as well as provide data for future experiments on lower-level temperature fluctuations due to tokamak microturbulence.

T. Munsat, E. Mazzucato and H. Park are with the Princeton Plasma Physics Laboratory, PO Box 451, Princeton NJ 08543. C.W. Domier, M. Johnson, N.C. Luhmann, Jr., J. Wang, and Z. Xia are with the University of California at Davis, Department of Applied Science, Davis, CA 95616. I.G.J. Classen, A.J.H. Donné and M.J. van de Pol are with the FOM-Institute for Plasma Physics Rijnhuizen, Association EURATOM-FOM, P.O. Box 1207, 3430 BE, Nieuwegein, The Netherlands.

This work is supported by the U.S. Department of Energy under contract Nos. DE-FG03-95ER-54295 and W-7405-ENG-48 and by EURATOM and NWO. Assistance from the TEXTOR team is gratefully acknowledged.

REFERENCES

- [1] Y. Nagayama, *et al.*, “Tomography of full sawtooth crashes on TFTR”, *Phys. Plasmas* 3, 1647 (1996).
- [2] V.S. Udintsev, “Electron Temperature Dynamics of TEXTOR Plasmas”, Ph.D. Thesis, University of Utrecht (2003).
- [3] Y. Nagayama, *et al.*, “Soft X-ray tomography of Sawtooth Oscillations in the JIPP-T-II Tokamak”, *Phys. Rev. Lett.* 61, 1839 (1988).
- [4] B.H. Deng, *et al.*, “ECE Imaging of Electron Temperature and Electron Temperature Fluctuations”, *Rev. Sci. Instrum.* 72, 301-306 (2001).
- [5] H. Park, *et al.*, “Simultaneous Microwave Imaging System for Density and Temperature Fluctuation Measurements on TEXTOR”, to be publ. in *Rev. Sci. Instrum.* 75 (2004).
- [6] S. von Goeler, *et al.*, “Studies of internal disruptions and $m=1$ oscillations in tokamak discharges with soft X-ray techniques”, *Phys. Rev. Lett.* 33, 1201 (1974).
- [7] B.B. Kadomtsev, “Disruptive instability in tokamaks”, *Fizika Plazmy* 1, 710 (1975).

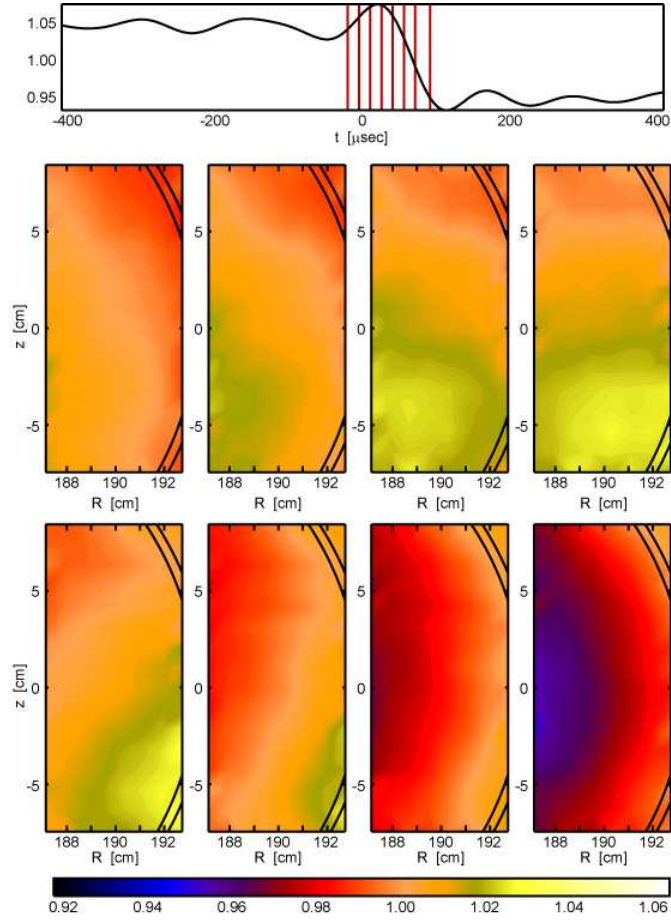


Figure 1. Progression of images of a sawtooth crash. The eight image times are indicated in the upper waveform. The inversion layer is estimated as the double black curve. The “hot spot” (yellow in the false-color scale) breaks through the inversion layer at the lower right corner of the field of view.

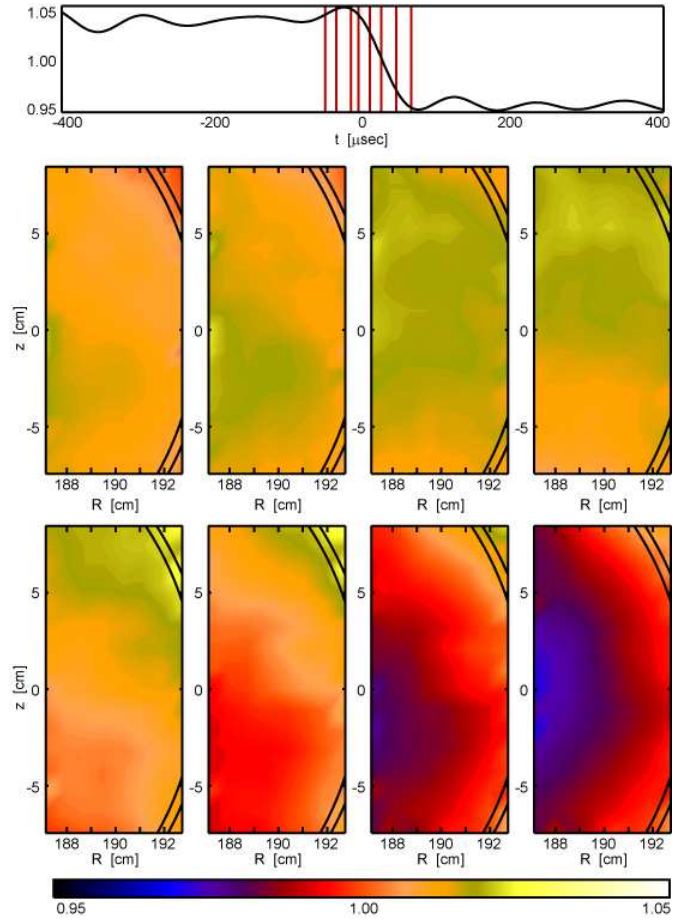


Figure 2. Progression of images taken during a sawtooth crash in which the “hot spot” breaks through the inversion layer just above the outer midplane.

External Distribution

Plasma Research Laboratory, Australian National University, Australia
Professor I.R. Jones, Flinders University, Australia
Professor João Canalle, Instituto de Fisica DEQ/IF - UERJ, Brazil
Mr. Gerson O. Ludwig, Instituto Nacional de Pesquisas, Brazil
Dr. P.H. Sakanaka, Instituto Fisica, Brazil
The Librarian, Culham Laboratory, England
Mrs. S.A. Hutchinson, JET Library, England
Professor M.N. Bussac, Ecole Polytechnique, France
Librarian, Max-Planck-Institut für Plasmaphysik, Germany
Jolan Moldvai, Reports Library, Hungarian Academy of Sciences, Central Research Institute
for Physics, Hungary
Dr. P. Kaw, Institute for Plasma Research, India
Ms. P.J. Pathak, Librarian, Institute for Plasma Research, India
Ms. Clelia De Palo, Associazione EURATOM-ENEA, Italy
Dr. G. Grosso, Instituto di Fisica del Plasma, Italy
Librarian, Naka Fusion Research Establishment, JAERI, Japan
Library, Laboratory for Complex Energy Processes, Institute for Advanced Study,
Kyoto University, Japan
Research Information Center, National Institute for Fusion Science, Japan
Dr. O. Mitarai, Kyushu Tokai University, Japan
Dr. Jiengang Li, Institute of Plasma Physics, Chinese Academy of Sciences,
People's Republic of China
Professor Yuping Huo, School of Physical Science and Technology, People's Republic of China
Library, Academia Sinica, Institute of Plasma Physics, People's Republic of China
Librarian, Institute of Physics, Chinese Academy of Sciences, People's Republic of China
Dr. S. Mirnov, TRINITI, Troitsk, Russian Federation, Russia
Dr. V.S. Strelkov, Kurchatov Institute, Russian Federation, Russia
Professor Peter Lukac, Katedra Fyziky Plazmy MFF UK, Mlynska dolina F-2,
Komenskeho Univerzita, SK-842 15 Bratislava, Slovakia
Dr. G.S. Lee, Korea Basic Science Institute, South Korea
Institute for Plasma Research, University of Maryland, USA
Librarian, Fusion Energy Division, Oak Ridge National Laboratory, USA
Librarian, Institute of Fusion Studies, University of Texas, USA
Librarian, Magnetic Fusion Program, Lawrence Livermore National Laboratory, USA
Library, General Atomics, USA
Plasma Physics Group, Fusion Energy Research Program, University of California
at San Diego, USA
Plasma Physics Library, Columbia University, USA
Alkesh Punjabi, Center for Fusion Research and Training, Hampton University, USA
Dr. W.M. Stacey, Fusion Research Center, Georgia Institute of Technology, USA
Dr. John Willis, U.S. Department of Energy, Office of Fusion Energy Sciences, USA
Mr. Paul H. Wright, Indianapolis, Indiana, USA

The Princeton Plasma Physics Laboratory is operated
by Princeton University under contract
with the U.S. Department of Energy.

Information Services
Princeton Plasma Physics Laboratory
P.O. Box 451
Princeton, NJ 08543

Phone: 609-243-2750
Fax: 609-243-2751
e-mail: pppl_info@pppl.gov
Internet Address: <http://www.pppl.gov>