

PREPARED FOR THE U.S. DEPARTMENT OF ENERGY,
UNDER CONTRACT DE-AC02-76CH03073

PPPL-3975
UC-70

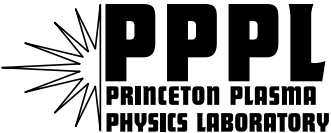
PPPL-3975

Anode Fall Formation in a Hall Thruster

by

Leonid A. Dorf, Yevgeny F. Raitses,
Artem N. Smirnov, and Nathaniel J. Fisch

June 2004



PRINCETON PLASMA PHYSICS LABORATORY
PRINCETON UNIVERSITY, PRINCETON, NEW JERSEY

PPPL Reports Disclaimer

This report was prepared as an account of work sponsored by an agency of the United States Government. Neither the United States Government nor any agency thereof, nor any of their employees, makes any warranty, express or implied, or assumes any legal liability or responsibility for the accuracy, completeness, or usefulness of any information, apparatus, product, or process disclosed, or represents that its use would not infringe privately owned rights. Reference herein to any specific commercial product, process, or service by trade name, trademark, manufacturer, or otherwise, does not necessarily constitute or imply its endorsement, recommendation, or favoring by the United States Government or any agency thereof. The views and opinions of authors expressed herein do not necessarily state or reflect those of the United States Government or any agency thereof.

Availability

This report is posted on the U.S. Department of Energy's Princeton Plasma Physics Laboratory Publications and Reports web site in Fiscal Year 2004. The home page for PPPL Reports and Publications is: http://www.pppl.gov/pub_report/

DOE and DOE Contractors can obtain copies of this report from:

U.S. Department of Energy
Office of Scientific and Technical Information
DOE Technical Information Services (DTIS)
P.O. Box 62
Oak Ridge, TN 37831

Telephone: (865) 576-8401

Fax: (865) 576-5728

Email: reports@adonis.osti.gov

This report is available to the general public from:

National Technical Information Service
U.S. Department of Commerce
5285 Port Royal Road
Springfield, VA 22161

Telephone: 1-800-553-6847 or
(703) 605-6000

Fax: (703) 321-8547

Internet: <http://www.ntis.gov/ordering.htm>



AIAA 2004-3779

Anode Fall Formation in a Hall Thruster

Leonid A. Dorf, Yevgeny F. Raitses, Artem N. Smirnov,
and Nathaniel J. Fisch

Princeton Plasma Physics Laboratory
Princeton, NJ 08543

**40th AIAA/ ASME/SAE/ASEE
Joint Propulsion Conference & Exhibit
11–14 July 2004
Fort Lauderdale, Florida**

For permission to copy or to republish, contact the copyright owner named on the first page.
For AIAA-held copyright, write to AIAA Permissions Department,
1801 Alexander Bell Drive, Suite 500, Reston, VA, 20191-4344.

Anode Fall Formation in a Hall Thruster

Leonid A. Dorf, Yevgeny F. Raitses, Artem N. Smirnov, and Nathaniel J. Fisch
Princeton Plasma Physics Laboratory, Princeton, New Jersey, 08543

As was reported in our previous work¹⁷, accurate, non-disturbing near-anode measurements of the plasma density, electron temperature, and plasma potential performed with biased and emissive probes allowed the first experimental identification of both electron-repelling (negative anode fall) and electron-attracting (positive anode fall) anode sheaths in Hall thrusters. An interesting new phenomenon revealed by the probe measurements is that the anode fall changes from positive to negative upon removal of the dielectric coating, which appears on the anode surface during the course of Hall thruster operation. As reported in the present work, EDS analysis of the chemical composition of the anode dielectric coating indicates that the coating layer consists essentially of an oxide of the anode material (stainless steel). However, it is still unclear how oxygen gets into the thruster channel. Most importantly, possible mechanisms of anode fall formation in a Hall thruster with a clean and a coated anodes are analyzed in this work; practical implication of understanding the general structure of the electron-attracting anode sheath in the case of a coated anode is also discussed.

I. Introduction

IN a gas discharge, there can be either an increase or a drop in the plasma potential toward the anode, generally referred to in the literature as the “anode fall”. When the anode is at a higher potential than the near-anode plasma, the anode fall is called “positive”, and when it is at a lower potential – “negative”. The positive and negative anode falls are essentially associated with formation of the electron-attracting and electron-repelling anode sheaths, respectively. The anode sheath is a thin space-charge layer adjoint to the electrode. It is a non-linear structure that was first observed and studied by Langmuir and Mott-Smith in glow discharges.¹

In spite of a number of experimental²⁻¹² and theoretical¹³⁻¹⁶ studies of a Hall thruster (HT) internal plasma structure, the understanding of the anode sheath phenomena in Hall Thrusters was, until recently, very limited. A more detailed review of previous works and motivation for studying the anode sheath phenomena in Hall Thrusters can be found in Refs. 17 and 18. As was reported in our recent publications, a diagnostic apparatus comprising biased and emissive electrostatic probes, a high-precision positioning system, and low-noise electronic circuitry was developed and used for measurements in the near-anode region of the 12.3 cm Hall thruster operating in the 0.2 – 2 kW power range^{17,19}. Accurate, non-disturbing near-anode measurements of the plasma density, electron temperature, and plasma potential performed with biased and emissive probes allowed the first experimental identification of both electron-repelling (negative anode fall) and electron-attracting (positive anode fall) anode sheaths in Hall thrusters. Most interestingly, an intricate new phenomenon revealed by the probe measurements is that the anode fall changes from positive to negative upon removal of the dielectric coating, which appears on the anode surface during the course of Hall thruster operation.¹⁷ The dependence of the sign and magnitude of the anode sheath on the discharge voltage and mass flow rate was also studied in Ref. 17, and the results of this investigation were found to be in agreement with our recent theoretical model.^{17,18,20} Particularly, it was found that when the electron temperature, T_e , in the channel increases with the discharge voltage, V_d , the magnitude of the negative anode fall at a clean anode also increases with V_d .

In this paper, we report our most recent findings about the nature of the anode dielectric coating, present pictures of the clean and coated anodes, as well as the visual evidence of 2kW Hall thruster operation in both cases, and analyze possible mechanisms of anode fall formation in a Hall thruster with the clean and coated anodes; we conclude with the discussion about possible practical implication of the presented work.

II. Anode Dielectric Coating

A. Coating Formation and Appearance

It was observed experimentally for the 2 kW Hall thruster in this study that a dielectric coating appears on the anode surface exposed to plasma after the thruster accumulates about 10 or more hours of lifetime, operating at typical conditions (Fig. 1). A layer of coating was typically thin – about several tens of microns – and ranged in color from blue-green to golden-brown, with sometimes several colors present on the same coated anode. In some cases, after several tens of hours of thruster operation, the coating would accumulate to be up to 0.1 mm thick, and then it would split off – the scraps of coating were found at the bottom part of the channel. Furthermore, distinctive spots were observed next to each of the gas-injecting holes hidden under the gas-mixing baffles (Fig. 1).

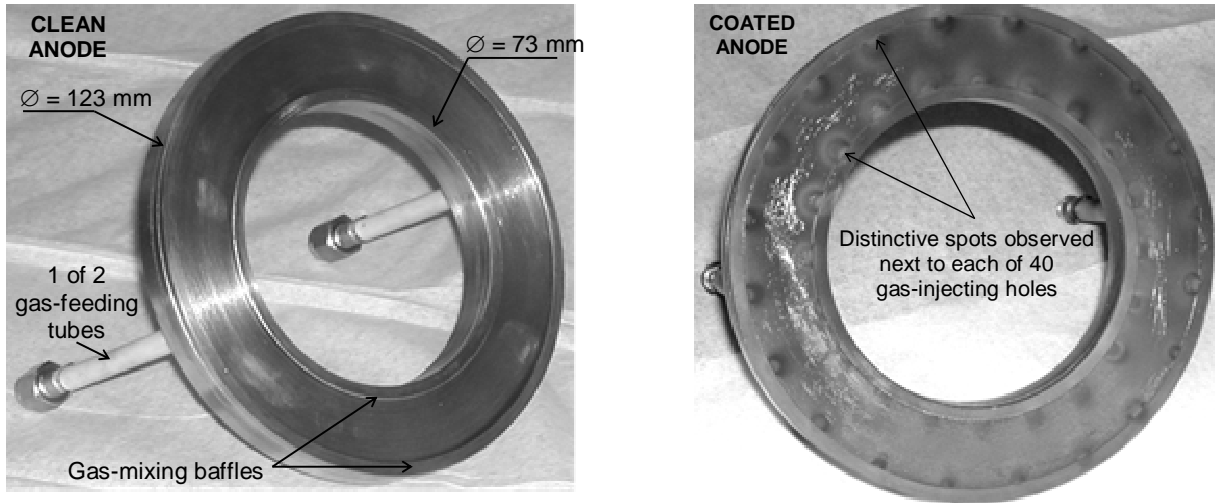


Figure 1: Anode of the 2 kW Hall thruster before (left) and after (right) thruster operation.
Accumulated lifetime > 10 hours.

B. Coating Chemical Composition

To identify the chemical composition of the coating, three small samples were inserted under the baffle at the bottom part of the anode. Two samples were made out of the same material as the anode – stainless steel – and one sample was made out of tantalum. After several hours of thruster operation, the samples were extracted and a dielectric coating was observed on each of the samples. The coating on the tantalum sample was of a homogeneous blue-green color, and the coating on the stainless steel samples was of a yellow-red color. All three samples were then sent to Stork MMA Testing Laboratories (Newtown, PA) for Energy Dispersion Spectroscopy (EDS) analysis of the coating material. Results of EDS analysis – *counts per energy* spectra of the X-ray radiation emitted by the atoms of the coating as a result of electron bombardment – are reported in Ref. 18. It was ultimately suggested by Stork MMA metallurgists that the coatings on all three samples are essentially the oxides of the substrate materials. The anode material, stainless steel, can indeed be expected to get oxidized during thruster operation, since the anode temperature could reach about 1000 C at typical thruster operating conditions.

It is still unclear, however, how oxygen gets into the thruster channel. Impurity limits data for a research grade Xenon used in the presented experiments (see Ref. 18) suggests that only insignificant amount of oxygen enters the channel along with the xenon propellant, since the percentage of O₂ in the cylinder containing the supply of xenon is very low – less than 0.1 ppm (parts per million). It can alternatively be suggested that the presence of oxygen in the thruster channel is the vacuum facility effect – outgassing of the vacuum vessel walls and cryogenic pumps interior could be one of the sources of oxygen, for example. A detailed investigation of oxygen origination and its content in the vacuum vessel needs to be conducted with the use of a residual gas analyzer (RGA) that is already installed on one of the ports of the HTX vacuum vessel. Information about the content of oxygen in the background gas inside the vacuum vessel can then be used to estimate the anode surface oxidation rate and coating formation time.

III. Operation of the 2 kW Hall Thruster with Clean and Coated Anodes

Figure 2 shows discharge current, I_d , vs. discharge voltage, V_d , characteristics of the 12.3 cm Hall thruster with the clean and coated anodes (referred to as “Clean” and “Coat”, respectively) for several mass flow rates. As can be seen, the characteristics are similar for two anodes. Figure 3 shows some of the results of biased probe measurements in the near-anode region of the 2 kW Hall thruster with the clean and coated anodes, respectively, for $\dot{m} = 5 \text{ mg/s}$. Zero potential and $Z = 0$ are chosen at the anode. As can be seen from Fig. 3, in the case of the clean anode, the plasma potential at 2 – 12 mm from the anode is higher than the anode potential – the anode fall is negative. This indicates the presence of an electron-repelling anode sheath predicted theoretically in Hall thrusters.^{13,16,20} Alternatively, in the case of the coated anode, the plasma potential at 2 – 12 mm from the anode is lower than the anode potential – the anode fall is positive. This indicates the presence of an electron-attracting anode sheath. Furthermore, it was observed that thruster operation with a coated anode is associated with a visual effect: the gas-injecting holes glow brighter than the rest of the anode, with appearance of a jet-like structure from each hole (Fig. 4).

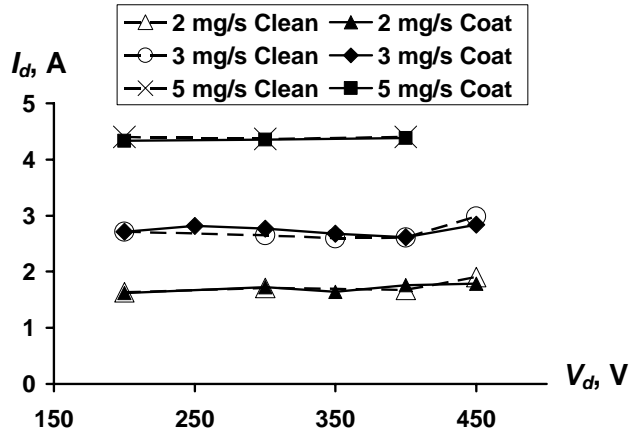


Figure 2: Discharge current, I_d , vs. discharge voltage, V_d , characteristics of the 12.3 cm HT. Measured at several mass flow rates for the clean and coated anodes.

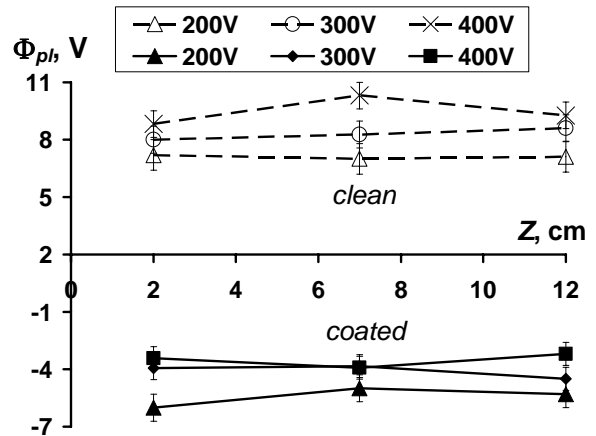


Figure 3: Results of biased probe measurements in the near-anode region of the 12.3 cm HT. Plasma potential axial profile, $\Phi_{pl}(z)$, for the clean and coated anodes measured at the mass flow rate $\dot{m} = 5 \text{ mg/s}$ and several discharge voltages, in the midpoint between the channel walls ($R = 49 \text{ mm}$ from the thruster axis).

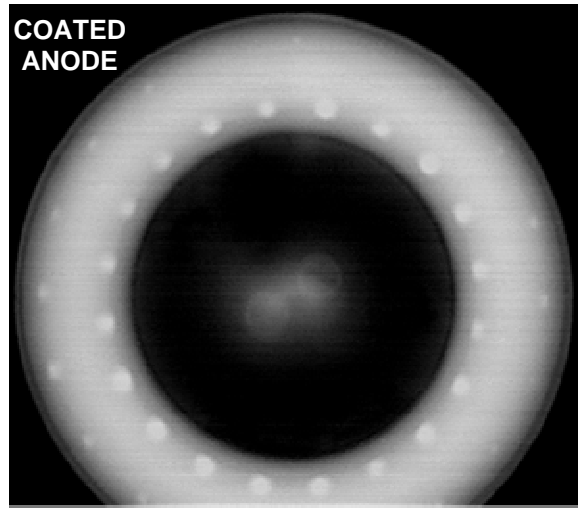
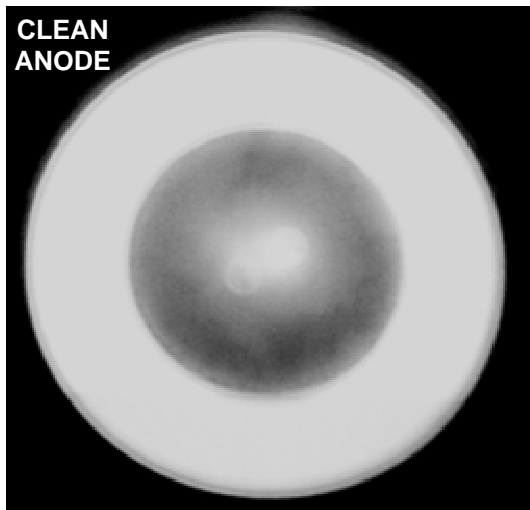


Figure 4: Photographs of 2 kW HT operation with the clean and coated anodes.

IV. Possible Mechanisms of Anode Fall Formation

A. Neutral Density Distribution

To understand anode sheath formation, first it is useful to analyze the distribution of the neutral density near and inside the anode. For $\dot{m} = 5 \text{ mg/s}$, rough density estimations yield that mean free path for neutral-neutral collisions inside the anode and gas-injecting holes is smaller than the diameter of the hole (Fig. 5), so hydrodynamic Bernoulli equation for neutral pressure, P_n , neutral density, n_n , and neutral flow velocity, V_n , can be employed to relate flows inside the holes and inside the anode:

$$P_n + M_n n_n V_n^2 / 2 = \text{Const} ,$$

where $M_n = 2.2 \cdot 10^{-22} \text{ g}$ is the mass of a Xenon atom.²² Taking into account the flow continuity equation along with the fact that the cross-sectional area of the anode cavity (almost equal to the collecting surface area of the clean anode, $A_{coll} = 77 \text{ cm}^2$) is much larger than the combined cross-sectional area of the holes, $A_H = 0.03 \text{ cm}^2$, the dynamic pressure term can be neglected inside the anode. Similar to the problem of the flow of gas through the nozzle,²² the neutral flow is assumed to have a sonic velocity inside the holes. For the isothermal flow with the neutral temperature equal to the anode temperature, $T_A \approx 1000 \text{ C}$, using the anode dimensions given in Fig. 5, it can be finally estimated for $\dot{m} = 5 \text{ mg/s}$ that: (1) – the neutral

density inside the holes is $n_H = \dot{m} / (M_n \cdot A_H \cdot \sqrt{T_A / M_n}) = 2.7 \cdot 10^{16} \text{ cm}^{-3}$, (2) – the static pressure in the holes is $P_H = n_H T_a \approx 3 \text{ Torr}$, and it is twice as big as the dynamic pressure, (3) – the static pressure inside the anode is $P_A = 3/2 P_H \approx 4.5 \text{ Torr}$, and (4) – the neutral density inside the anode is $n_A \approx 4 \cdot 10^{16} \text{ cm}^{-3}$. For the neutral-neutral collision cross-section $\sigma_{nn} \approx 3 \cdot 10^{-15} \text{ cm}^2$, the length of the mean free path inside the holes can be estimated as $\Lambda_H = 1 / (\sigma_{nn} \cdot n_H) \approx 0.12 \text{ mm}$, which is smaller than the hole diameter, $D_H = 0.3 \text{ mm}$. This estimation supports the aforementioned assumption of the hydrodynamic flow inside the holes. Assume now that after the jets that are coming out of the gas-injecting holes hit the baffles (Fig. 5), the neutral gas spreads out and homogeneously fills up the volume under the baffles. Then, assuming that the neutral gas leaves the volume under the baffles and enters the channel with the velocity of a free atomic flow, $V_a = \sqrt{T_A / (2 \cdot \pi \cdot M_n)} \approx 113 \text{ m/s}$, the average neutral density, neutral pressure, and the length of the mean free path for neutral-neutral collisions under the baffles can be estimated as $n_B \approx \dot{m} / (M_n \cdot V_a \cdot A_B) \approx 5.5 \cdot 10^{14} \text{ cm}^{-3}$, $P_B = n_B T_A \approx 75 \text{ mTorr}$, and $\Lambda_B = 1 / (\sigma_{nn} \cdot n_B) \approx 6 \text{ mm}$, respectively. In the above estimation, $A_B = \pi \cdot (D_{out} + D_{in}) \cdot \Delta_B \approx 3.7 \text{ cm}^2$ is the area of the surface through which the gas leaves the volume under the baffles, calculated using the dimensions given in Fig. 5. Finally, when the neutral gas distributes uniformly over the entire channel cross-section (see Ref. 23) and bleeds through the channel with the velocity V_a , the density, pressure, and the length of the mean free path near the anode can be estimated as $n_C \approx \dot{m} / (M_n \cdot V_a \cdot A_{coll}) \approx 2.6 \cdot 10^{13} \text{ cm}^{-3}$, $P_C = n_C T_A \approx 3.5 \text{ mTorr}$, and $\Lambda_B = 1 / (\sigma_{nn} \cdot n_C) \approx 12 \text{ cm}$, respectively.

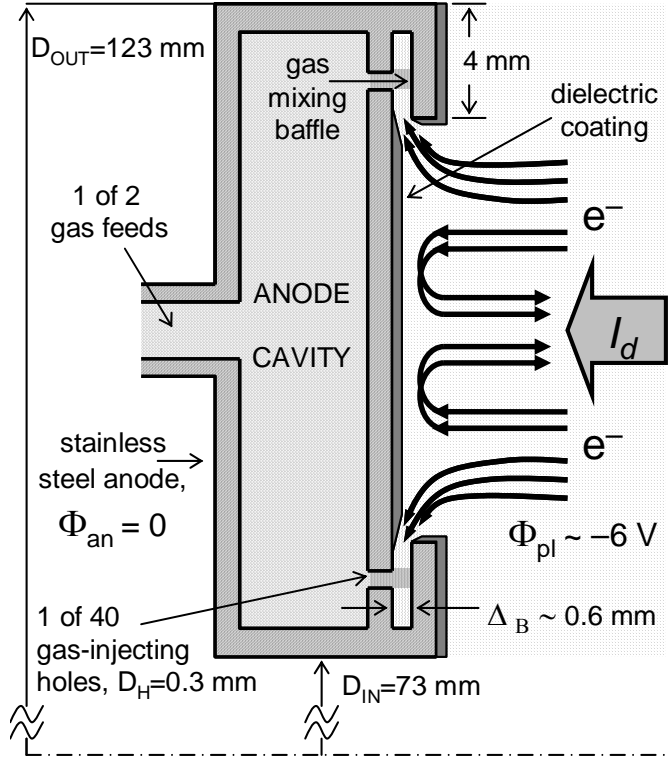


Figure 5: Possible mechanism of formation of a positive fall at the coated anode

B. Formation of a Negative Fall at the Clean Anode

In the quasineutral plasma between the clean anode and the acceleration region, the electron drift velocity, $V_{dr} \sim I_d / (e \cdot n \cdot A_{coll}) \approx 10^7$ cm/s, is much smaller than the average velocity of the half-Maxwellian electron flux that would be traveling toward the anode in the absence of an electron-repelling anode sheath, $V_{HM} = \sqrt{2T_e / (\pi m_e)} \approx 8 \cdot 10^7$ cm/s. The above estimation was made using the channel cross-section equal to $A_{coll} = 77$ cm², the measured discharged current, $I_d = 4.35$ A, and the plasma density, n , along with the electron temperature, T_e , measured in the mid-point between the channel walls at 2 mm from the anode for $V_d = 200$ V and $\dot{m} = 5$ mg/s (this data is presented in Refs. 18 and 21). Thus, the thermal electron flux to the anode would carry an electric current much greater than the discharge current. At mass flow rates typical for the 2 kW Hall thruster, electron-neutral collisions are very weak near the anode ($\Lambda_{en} \sim \Lambda_{nn} \approx 12$ cm), so is the magnetic field in the conventional configuration (see Ref. 18). Therefore, formation of an electron-repelling anode sheath (negative anode fall) is required to repel an excessive electron flux from the anode. A reversed electron flux created in the electron-repelling anode sheath decreases the net electron velocity in the quasineutral plasma near the anode to the value V_{dr} determined by the discharge current, thus providing current continuity everywhere.

C. Formation of a Positive Fall at the Coated Anode

In the case of the coated anode (Fig. 5), the electron drift velocity estimated the same way as above, is even smaller, $V_{dr} \approx 5 \cdot 10^6$ cm/s, because for the same operating conditions the plasma density measured near the coated anode is almost twice as big as it is near the clean anode (see Refs. 17 and 18). Since the electron thermal velocity is almost the same (see Refs. 17 and 18), formation of an *electron-repelling sheath* at the *coated anode surface* is again required to decrease the net electron velocity in the quasineutral plasma near the anode from V_{HM} to V_{dr} . By reflecting electrons and creating an ion backflow this sheath also allows satisfying the condition of a zero net current to dielectric.

1. *Electron-Attracting Anode Sheath*

While the anode surface exposed to plasma gets coated with dielectric, some elements of the anode surface, for example the inner side of the gas-mixing baffles or the interior of the gas-injecting holes, may remain conductive (Fig. 5). When the anode front surface is coated with dielectric, the discharge current supposedly closes to the anode at these conductive surfaces by the electrons that are not repelled. A half-Maxwellian electron flux entering the volume under the baffles carries the electric current $I_{HM} = 1/2 \cdot (1.5 \cdot n) \cdot \sqrt{2T_e / (\pi m_e)} \cdot e \cdot A_B \approx 1.76$ A, which constitutes about 40% of the measured discharge current, $I_d = 4.32$ A (see Figs. 2 and 5). The above estimation is made using the plasma density, n , and electron temperature, T_e , measured in the mid-point between the channel walls at 2 mm from the anode for $V_d = 200$ V and $\dot{m} = 5$ mg/s (see Refs. 18 and 21), and considering the maximum (~50%) relative error in determining the plasma density from biased probe measurements (see Ref. 19). The remainder 60% of the electron flux gets drawn in under the baffles by the *electron-attracting sheath* that appears at the inner, *metal sides of the baffles*. Due to this sheath, the near-anode plasma potential appears to be about 4 – 6 V lower than the anode potential (Fig. 3). The plasma in this electron-attracting sheath can be almost purely electron, like in a vacuum diode, since its characteristic scale, $\Delta_B = 0.6$ mm (Fig. 5), is only several Debye lengths estimated at 2 mm from the anode, $\lambda_D = \sqrt{T_e / (4\pi \cdot n_e \cdot e^2)} \sim 0.075$ mm. The electron density under the baffles in the case of the coated anode is much larger than in the case of the clean anode, in which only the electrons that penetrate through the electron-repelling sheath enter the volume under the baffles. This could explain such intricate phenomena as distinctive glowing next to each of the gas-injecting holes (where the neutral density is the largest) observed during operation of the 12.3 cm Hall thruster with the coated anode (Fig. 4).

2. *Enhanced Ionization*

It was observed experimentally for Hall thrusters that penetration of the electrons into the anode cavity can cause ionization of the neutral gas inside the anode.³ Furthermore, near the anode, the discharge of a Hall thruster with a coated anode can be compared to that of an extensively studied hollow-anode plasma source^{24,25}, as the coated anode has two essential features of the hollow anode: a collecting surface area that is significantly smaller than the cross-sectional area of the discharge chamber, and an insulated front surface. A high degree of ionization inside the hollow-anode plasma source – near-anode electron density of $10^{10} - 10^{11}$ cm⁻³ at nitrogen flow rate of 25 scc/min – was attributed to formation of a thick electron-attracting anode sheath, in which electrons gain kinetic

energy of up to 40 eV.²⁶ Thus, it can be suggested that formation of a positive fall at the coated anode in the 2 kW Hall thruster could be explained by the need for enhanced ionization: additional ionization in the sheath or inside the anode would increase the electron flux toward anode conductive surfaces to the value determined by the discharge current.¹⁷ However, the neutral gas pressure in front of the anode in a hollow-anode plasma source is about 100 times larger (and therefore the ionization length is about 100 times smaller) than it is near the coated anode in a Hall thruster (see Ref. 26). Furthermore, as it was later reported by Melikov in Ref. 4, noticeable ionization inside the anode occurs only if the anode temperature is lower than ~ 500 C. At higher temperatures, the neutral pressure, $p_n \geq 2$ Torr, becomes comparable to the electron pressure, $p_e \sim 1.9$ Torr, and the discharge is carried by the gas flow out of the anode cavity (these estimations were made for the plasma density $n = 10^{10} \text{ cm}^{-3}$, electron temperature $T_e = 8 \text{ eV}$, and mass flow rate of 2 mg/s). Also noteworthy is that spectroscopic measurements inside a hollow-anode plasma source performed by Miljevic (see Ref. 25) were later repeated by Young *et al* (see Ref. 27), who observed the ionization degree of only 0.06 – 0.15%.

The following estimations can be used to demonstrate that formation of a positive anode fall at the coated anode in the 2 kW Hall thruster is unlikely to be explained by the need for enhanced ionization. For a half-Maxwellian electron flux with the temperature $T_{eB} \sim 10 \text{ eV}$ and neutral densities calculated above, ionization lengths in front of the anode, under the baffles, inside the gas-injecting holes, and inside the anode can be estimated as $\Lambda_C^i \sim 1/(\langle \sigma^i \rangle \cdot n_C) \approx 1 \text{ m}$, $\Lambda_B^i \sim 4.5 \text{ cm}$, $\Lambda_H^i \sim 1 \text{ mm}$, and $\Lambda_A^i \sim 0.6 \text{ mm}$, respectively. Here, $\langle \sigma^i \rangle = \langle \sigma^i \cdot V_e \rangle / V_{HM} \approx 4 \cdot 10^{-16} \text{ cm}^2$ is the energy-dependent electron impact ionization cross-section for Xenon atoms, averaged over the half-Maxwellian distribution (see Refs. 18 and 28). Thus, significant multiplication of the electron flux entering the volume under the baffles could occur only inside the holes or inside the anode. While electrons produced by ionization would reach the metal surface and contribute to the discharge current, corresponding ions would have to stream out into the channel and recombine with electrons at the anode dielectric surface, to provide charge conservation and current continuity everywhere. As follows from the estimations above, the ion flux from the volume under the baffles would then represent about 60% of the discharge current, so ion density under the baffles can be estimated as $n_{iB} \sim 0.6 \cdot I_d / (e \cdot V_{iB} \cdot A_B) \approx 3.3 \cdot 10^{13} \text{ cm}^{-3}$, assuming ions are accelerated in the positive anode fall to the velocity $V_{iB} \sim \sqrt{e \cdot \Phi_{pl} / M_{Xe}} \approx 2 \cdot 10^5 \text{ cm/s}$. The plasma density inside the holes would have to be even larger, since $A_B / A_H \sim 100$. However, the plasma densities measured inside the Hall thruster anode (Ref. 3), in the vicinity of the anode hole in a hollow-anode plasma source (Ref. 26), and at 2 mm from the anode in the 12.3 cm Hall thruster (Ref. 18) were observed to be of the order of $10^{10} - 10^{11} \text{ cm}^{-3}$. Thus, additional ionization inside the anode and gas-injecting holes is unlikely to be the process that maintains current balance at the anode surface, from which we conclude that formation of a positive fall at the coated anode is unlikely to be explained by the need for enhanced ionization.

V. Discussion

Understanding of the anode sheath structure in the case of a coated anode, developed in this work, might be useful for designing a thruster anode. As was explained above, when the anode front surface is coated with dielectric, the discharge current supposedly closes to the anode at the surfaces that remain conductive. It is yet unclear how oxygen that forms anode dielectric coating (oxide layer) gets into the discharge chamber, but since the vacuum facility used in the presented experiments is typical for studies of a Hall thruster, it can be suggested that coating formation is a general issue for laboratory Hall Thrusters [see, for example, Ref. 29, pp. 214, 377]. Moreover, if oxygen enters the thruster channel along with the xenon propellant, this issue could also be expected for thrusters used in actual space applications. Therefore, when designing an anode (which is not necessarily also a gas distributor) for a HT, one has to ensure that some surfaces will remain conductive if the anode front surface gets coated with a dielectric, so that combined conductive surface area is sufficient for passing a discharge current. Furthermore, appearance of the dielectric coating is associated with an electron-attracting anode sheath that forms at the anode conductive surfaces. The electron energy flux toward these surfaces in the case of a coated anode will be much higher than in the case of a clean anode, in which only the electrons that penetrate through the electron-repelling sheath reach the anode; plus, electrons gain additional kinetic energy while moving inside the electron-attracting sheath toward the anode conductive surfaces. Thus, one also has to ensure that these surfaces will not overheat during thruster operation.

Acknowledgments

The authors are grateful to Dr. Vladimir Semenov and David Staack for fruitful discussions. This work was supported by US DOE Contract No. AC02-76CH0-3073 and NJ Commission for Science and Technology.

References

- ¹ LANGMUIR, I. and MOTT-SMITH H. M. (1924). *Gen. Elec. Rev.* **27**, 449, 538, 616, 761, 810. Also see: *The Collected Works of Irving Langmuir*, edited by SUITS, C. G. and WAY, H. E. (Pergamon, New York, 1961), *Vol. 4*.
- ² MOROZOV, A. I., ESINCHUK, Yu. V., TILININ, G. N., TROFIMOV, A. V., SHAROV, Yu. A., and SHCHEPKIN, G. Ya. (1972). Plasma Accelerator with Closed Electron Drift and Extended Acceleration Zone. *Sov. Phys. Tech. Phys.* **17**, 38.
- ³ MELIKOV, I. V. (1974). Experimental Investigation of Anode Processes in a Closed electron-drift accelerator. *Sov. Phys. Tech. Phys.* **19**, 35.
- ⁴ MELIKOV, I. V. (1977). Point and Jet Ionization in a Hall Plasma Accelerator. *Sov. Phys. Tech. Phys.* **22**, 452.
- ⁵ BISHAEV, A. M. and KIM, V. (1978). Local Plasma Properties in a Hall-Current Accelerator with an Extended Acceleration Zone. *Sov. Phys. Tech. Phys.* **23**, 1055.
- ⁶ GUERRINI, G., MICHAUT, C., DUDECK, M., VESSELOVZOROV, A. N., and BACAL, M. (1997). Characterization of Plasma Inside the SPT-50 Channel by Electrostatic Probes. Proceedings of the 25th International Electric Propulsion Conference, Aug 1997, Cleveland, OH, IEPC Paper 1997-053.
- ⁷ RAITSES, Y., ASHKENAZY, J., and GUELMAN, M. (1998). Propellant Utilization in Hall Thrusters. *J. Prop. Power* **14**, 247.
- ⁸ RAITSES, Y., DORF, L. A., LITVAK, A. A., and FISCH, N. J. (2000). Plume Reduction in Segmented Electrode Hall Thruster. *J. Appl. Phys.* **88**, 1263.
- ⁹ RAITSES, Y., KEIDAR, M., STAACK, D., FISCH, N. J. (2002). Effects of Segmented Electrode in Hall Current Plasma Thruster. *J. Appl. Phys.* **92**, 4906.
- ¹⁰ HAAS, J. M. and GALLIMORE, A. D. (2001). Internal Plasma Potential Profiles in a Laboratory-Model Hall Thruster. *Phys. Plasmas* **8**, 652.
- ¹¹ MEEZAN, N. B., HARGUS, W. A., Jr., and CAPPELLI, M. A. (2001). Anomalous Electron Mobility in a Coaxial Hall Discharge Plasma. *Phys. Rev. E* **63**, 026410.
- ¹² WARNER, N. Z., SZABO, J. J., and MARTINEZ-SANCHEZ, M. (2003). Characterization of a High Specific Impulse Hall Thruster Using Electrostatic Probes. Proceedings of the 28th International Electric Propulsion Conference, March 2003, Toulouse, France, IEPC Paper 2003-082.
- ¹³ AHEDO, E., MARTINEZ-CEREZO, P., and MARTINEZ-SANCHEZ, M. (2001). One-Dimensional Model of a Plasma Flow in a Hall Thruster. *Phys. Plasmas* **8**, 3058.
- ¹⁴ FRUCHTMAN, A., FISCH, N. J., and RAITSES, Y. (2001). Control of the Electric Field Profile in the Hall Thruster. *Phys. Plasmas* **8**, 1048.
- ¹⁵ KEIDAR, M., BOYD, I., and BEILIS, I. (2002). Analyses of the Anode Region in a Hall Thruster Channel. 38th Joint Propulsion Conference and Exhibit, July 2002, Indianapolis, IN, AIAA Paper 2002-4107.
- ¹⁶ DORF, L., SEMENOV, V., RAITSES, Y., and FISCH, N. J. (2002). Hall Thruster Modeling with a Given Temperature Profile. 38th Joint Propulsion Conference and Exhibit, July 2002, Indianapolis, Indiana, AIAA paper 2002-4246.
- ¹⁷ DORF, L., RAITSES, Y., SEMENOV, V., and FISCH, N. J. (2004). Effect of Anode Dielectric Coating on Hall Thruster Operation. *Appl. Phys. Lett.* **84**, 1070.
- ¹⁸ DORF, L. (2004). Studies of Anode Sheath Phenomena in Hall Thrusters. Ph.D. Dissertation. Princeton University, Princeton, NJ 08544, USA.
- ¹⁹ DORF, L., RAITSES, Y., and FISCH, N. J. (2004). Electrostatic Probe Apparatus for Measurements in the Near-Anode Region of Hall Thrusters. *Rev. Sci. Instrum.*, **75**, 1255.
- ²⁰ DORF, L., SEMENOV, V., and RAITSES, Y. (2003). Anode Sheath in Hall Thrusters. *Appl. Phys. Lett.* **83**, 2551.
- ²¹ DORF, L., RAITSES, Y., and FISCH, N. J. (2004). Experimental Studies of Anode Sheath Phenomena in a Hall Thruster Discharge. Submitted to *J. Appl. Phys.*
- ²² LANDAU, L. D., and LIFSHITZ, E. M. (1987). Fluid Mechanics. In *Course of Theoretical Physics, 2nd edition* (Butterworth-Heinemann, Oxford), *Vol. 6*.
- ²³ VIAL, V., LAZURENKO, A., LAURE, C., and BOUCHOULE, A. (2003). Xenon Gas Injection in SPT Thrusters. Proceedings of the 28th International Electric Propulsion Conference, March 2003, Toulouse, France, IEPC Paper 2003-0221.
- ²⁴ MILJEVIC, V. I. (1984). Hollow Anode Ion-Electron Source. *Rev. Sci. Instrum.* **55**, 931.
- ²⁵ MILJEVIC, V. I. (1984). Spectroscopy of Hollow Anode Discharge. *Appl. Optics* **23**, 1598.
- ²⁶ ANDERS, A. and ANDERS, S. (1995). The Working Principle of the Hollow-Anode Plasma Source. *Plasma Sources Sci. Technol.* **4**, 571 (Printed in the UK).
- ²⁷ YOUNG, M., MUNTZ, E. P., and KETSDEVER, A. D. (1998). Investigation of a Candidate Non-Magnetic Ion Micro-Thruster for Small Spacecraft Applications. 34th Joint Propulsion Conference and Exhibit, July 1998, Cleveland, OH, AIAA Paper 1998-3917.
- ²⁸ RAPP, D. and ENGLANDER-GOLDEN, P. (1965). Total Cross Sections for Ionization and Attachment in Gases by Electron Impact: I. Positive Ionization. *J. Chem. Phys.* **43**, 1464.
- ²⁹ MOROZOV, A. I., and SAVELYEV, V. V. (2000). Fundamentals of Stationary Plasma Thruster Theory. In *Reviews of Plasma Physics*, edited by KADOMTSEV, B. B. and SHAFRANOV, V. D. (Kluwer Academic/Plenum Publishers, New York), *Vol. 21*.

External Distribution

Plasma Research Laboratory, Australian National University, Australia
Professor I.R. Jones, Flinders University, Australia
Professor João Canalle, Instituto de Fisica DEQ/IF - UERJ, Brazil
Mr. Gerson O. Ludwig, Instituto Nacional de Pesquisas, Brazil
Dr. P.H. Sakanaka, Instituto Fisica, Brazil
The Librarian, Culham Laboratory, England
Mrs. S.A. Hutchinson, JET Library, England
Professor M.N. Bussac, Ecole Polytechnique, France
Librarian, Max-Planck-Institut für Plasmaphysik, Germany
Jolan Moldvai, Reports Library, Hungarian Academy of Sciences, Central Research Institute
for Physics, Hungary
Dr. P. Kaw, Institute for Plasma Research, India
Ms. P.J. Pathak, Librarian, Institute for Plasma Research, India
Ms. Clelia De Palo, Associazione EURATOM-ENEA, Italy
Dr. G. Grosso, Instituto di Fisica del Plasma, Italy
Librarian, Naka Fusion Research Establishment, JAERI, Japan
Library, Laboratory for Complex Energy Processes, Institute for Advanced Study,
Kyoto University, Japan
Research Information Center, National Institute for Fusion Science, Japan
Dr. O. Mitarai, Kyushu Tokai University, Japan
Dr. Jiengang Li, Institute of Plasma Physics, Chinese Academy of Sciences,
People's Republic of China
Professor Yuping Huo, School of Physical Science and Technology, People's Republic of China
Library, Academia Sinica, Institute of Plasma Physics, People's Republic of China
Librarian, Institute of Physics, Chinese Academy of Sciences, People's Republic of China
Dr. S. Mirnov, TRINITI, Troitsk, Russian Federation, Russia
Dr. V.S. Strelkov, Kurchatov Institute, Russian Federation, Russia
Professor Peter Lukac, Katedra Fyziky Plazmy MFF UK, Mlynska dolina F-2,
Komenskeho Univerzita, SK-842 15 Bratislava, Slovakia
Dr. G.S. Lee, Korea Basic Science Institute, South Korea
Institute for Plasma Research, University of Maryland, USA
Librarian, Fusion Energy Division, Oak Ridge National Laboratory, USA
Librarian, Institute of Fusion Studies, University of Texas, USA
Librarian, Magnetic Fusion Program, Lawrence Livermore National Laboratory, USA
Library, General Atomics, USA
Plasma Physics Group, Fusion Energy Research Program, University of California
at San Diego, USA
Plasma Physics Library, Columbia University, USA
Alkesh Punjabi, Center for Fusion Research and Training, Hampton University, USA
Dr. W.M. Stacey, Fusion Research Center, Georgia Institute of Technology, USA
Dr. John Willis, U.S. Department of Energy, Office of Fusion Energy Sciences, USA
Mr. Paul H. Wright, Indianapolis, Indiana, USA

The Princeton Plasma Physics Laboratory is operated
by Princeton University under contract
with the U.S. Department of Energy.

Information Services
Princeton Plasma Physics Laboratory
P.O. Box 451
Princeton, NJ 08543

Phone: 609-243-2750
Fax: 609-243-2751
e-mail: pppl_info@pppl.gov
Internet Address: <http://www.pppl.gov>