

PREPARED FOR THE U.S. DEPARTMENT OF ENERGY,
UNDER CONTRACT DE-AC02-76CH03073

PPPL-3961
UC-70

PPPL-3961

**Microwave Scattering System Design
for p_e -scale Turbulence Measurements on NSTX**

by

D.R. Smith, E. Mazzucato, T. Munsat, H. Park, D. Johnson,
L. Lin, C.W. Domier, M. Johnson, and N.C. Luhmann, Jr.

May 2004



**PRINCETON PLASMA PHYSICS LABORATORY
PRINCETON UNIVERSITY, PRINCETON, NEW JERSEY**

PPPL Reports Disclaimer

This report was prepared as an account of work sponsored by an agency of the United States Government. Neither the United States Government nor any agency thereof, nor any of their employees, makes any warranty, express or implied, or assumes any legal liability or responsibility for the accuracy, completeness, or usefulness of any information, apparatus, product, or process disclosed, or represents that its use would not infringe privately owned rights. Reference herein to any specific commercial product, process, or service by trade name, trademark, manufacturer, or otherwise, does not necessarily constitute or imply its endorsement, recommendation, or favoring by the United States Government or any agency thereof. The views and opinions of authors expressed herein do not necessarily state or reflect those of the United States Government or any agency thereof.

Availability

This report is posted on the U.S. Department of Energy's Princeton Plasma Physics Laboratory Publications and Reports web site in Fiscal Year 2004. The home page for PPPL Reports and Publications is: http://www.pppl.gov/pub_report/

DOE and DOE Contractors can obtain copies of this report from:

U.S. Department of Energy
Office of Scientific and Technical Information
DOE Technical Information Services (DTIS)
P.O. Box 62
Oak Ridge, TN 37831

Telephone: (865) 576-8401

Fax: (865) 576-5728

Email: reports@adonis.osti.gov

This report is available to the general public from:

National Technical Information Service
U.S. Department of Commerce
5285 Port Royal Road
Springfield, VA 22161

Telephone: 1-800-553-6847 or
(703) 605-6000

Fax: (703) 321-8547

Internet: <http://www.ntis.gov/ordering.htm>

Microwave Scattering System Design for ρ_e -Scale Turbulence Measurements on NSTX

D.R. Smith,* E. Mazzucato, T. Munsat, H. Park, and D. Johnson

Plasma Physics Laboratory, Princeton University, Princeton, New Jersey 08543

L. Lin, C.W. Domier, M. Johnson, and N.C. Luhmann, Jr.

Department of Applied Science, University of California at Davis, Davis, California 95616

(Dated: April 16, 2004)

Abstract

Despite suppression of ρ_i -scale turbulent fluctuations, electron thermal transport remains anomalous in NSTX. For this reason, a microwave scattering system will be deployed to directly observe the ω and k spectra of ρ_e -scale turbulent fluctuations and characterize the effect on electron thermal transport. The scattering system will employ a Gaussian probe beam produced by a high power 280 GHz microwave source. A five-channel heterodyne detection system will measure radial turbulent spectra in the range $|k_r| = 0 - 20 \text{ cm}^{-1}$. Inboard and outboard launch configurations cover most of the normalized minor radius. Improved spatial localization of measurements is achieved with low aspect ratio and high magnetic shear configurations. This paper will address the global design of the scattering system, such as choice of frequency, size, launching system, and detection system.

I. INTRODUCTION

Recent theory work,¹ gyrokinetic simulations,^{2,3} and Tore Supra experimental results^{4,5} have highlighted the importance of electron thermal transport. In neutral beam heated NSTX⁶ plasmas, beam power is expected to transfer preferentially to electrons, yet measured ion temperatures exceed measured electron temperatures.^{7,8} Power balance analysis indicates ion thermal transport is at or near neoclassical levels while electron thermal transport remains anomalous. In addition, gyrokinetic simulations⁹ predict low growth rates for ion temperature gradient (ITG) modes and trapped electron modes (TEM) with $k_{\perp}\rho_i \lesssim 1$ while electron temperature gradient (ETG) modes with $k_{\perp}\rho_i \gg 1$ have larger growth rates. These results point to the possibility that ETG modes drive the anomalous electron thermal transport observed in NSTX. High-k core turbulence measurements are needed to confirm the existence of ETG modes. Only the coherent scattering of electromagnetic radiation can probe such small scale fluctuations. In this effort, a microwave scattering system will be deployed on NSTX to investigate ρ_e -scale turbulence.

NSTX is well suited for ETG studies. ρ_i -scale turbulence, known to drive electron thermal transport, is believed suppressed due to $E \times B$ flow shear. Low magnetic field $B \sim .45 T$ results in relatively large electron gyroradii of $\rho_e \leq 250 \mu m$. Also, low aspect ratio and high magnetic shear configurations lead to improved spatial localization of measurements.^{10,11}

Design criteria are addressed in Section II. The scattering system is described in Section III. A summary is given in Section IV.

II. DESIGN CRITERIA

Scattering systems are typically oriented for launch either in the poloidal cross section to measure primarily k_{θ} or in the toroidal midplane to measure primarily k_r , the scattering component relevant for radial transport. Due to port access, the NSTX scattering system will launch at a 5° angle to the toroidal midplane and measure primarily k_r , but small k_{θ} , k_{ϕ} components are introduced.

Given an incident beam ω_i, \vec{k}_i , a turbulent fluctuation ω, \vec{k} will scatter a small fraction of

the incident power into a scattered beam ω_s, \vec{k}_s such that

$$\omega_s = \omega_i + \omega \quad (1)$$

$$\vec{k}_s = \vec{k}_i + \vec{k}. \quad (2)$$

The NSTX scattering system will employ a 280 *GHz* microwave source as described below. With $\omega/2\pi \lesssim 1$ *MHz*, we can take $\omega_s = \omega_i$. This gives

$$k_i = k_s, \quad (3)$$

and therefore Eq. 2 describes an isosceles triangle.

The anisotropic fluctuations $k_\perp \gg k_\parallel$ of drift wave turbulence allow measurement localization beyond the mere overlap of the incident and “antenna” beams. Specifically, permissible fluctuation wave vectors are constrained to a plane defined by

$$\vec{k} \cdot \vec{B} = 0. \quad (4)$$

Variations in magnetic field orientation due to magnetic shear¹⁰ and toroidal curvature¹¹ modify the instrument selectivity function which, in essence, constricts the volume observed by the detection receiver. The methods of Ref. 11 will be employed to calculate the scattering volume. An example is shown in Figure 1 with $k = 10$ *cm*⁻¹.

The scattering system is designed with the flexibility to detect scattered signals with both $k_r > 0$ and $k_r < 0$ as shown in Figure 2. The outboard launch configuration has a tangency point $R = 1.38$ *m* and the five-channel detection system observes scattered signals with $k_r = -20.8, -15.3, -10.5, -6.0, -2.0$ *cm*⁻¹. The inboard launch configuration has a tangency point $R = 1.11$ *m* and scattered signals with $k_r = 3.9, 8.0, 12.4, 16.1, 19.5$ *cm*⁻¹ are observed. The sweep angle between inboard and outboard launch is 10.4°. In this manner fluctuation measurements in regions with different gradient scale lengths is possible. In both scenarios the probe beam is launched 5° below the midplane.

III. SCATTERING SYSTEM

The scattering system can be described in terms of four major components: microwave source, launch port, detection port, and data acquisition.

A. Microwave Source

A carcinotron source will supply 200 *mW* of microwave power at 280 *GHz* ($\lambda = 1.07$ *mm*). Scattered signals of 5×10^{-12} *W* are expected. With a detection system NEP of 2×10^{-13} *W*, the carcinotron source should be sufficient. However, if more microwave power is required, a 20 *W*, 354 *GHz* gyrotron source is available.¹² The higher frequency will also provide access to higher k_r .

Overmoded, corrugated waveguide will transport the microwave power to the launching port. Suitable optics will position the beam waist at the expected scattering region to minimize the scattering volume.

B. Launch Port

As shown in Figure 3, the probe beam enters the vacuum vessel through a water-free quartz window.¹³ The window normal is oriented vertically and the beam enters 5° off vertical. A transmittance of 0.84 is achieved with etalon optimization of window thickness as shown in Figure 4. The 5° incidence of the beam shifts the optimized window thickness 40 μm . A turning mirror residing 4 *cm* above the midplane and oriented at 45° to the beam redirects the beam for ordinary mode launch 5° below the horizontal. The turning mirror can rotate about an axis 5° off vertical providing access to inboard and outboard launch configurations.

Three neutral beam sources are directed towards the launch port as depicted in Figure 2. Previously, the vacuum vessel and port cover were protected by graphite neutral beam armor. To permit diagnostic access, a strip of armor centered on the midplane has been removed as noted in Figure 3. Three graphite neutral beam baffles and a fourth vacuum vessel graphite tile will be installed to protect exposed vacuum vessel, port cover, and diagnostic equipment from neutral beam site lines. In this manner, the port cover and diagnostic equipment can safely exist in the shadows of the baffles.

C. Detection Port

The detection port includes a collection mirror that reflects the scattered signals to five exit windows. The collection mirror is spherical with a 3 *m* radius of curvature and the

mirror normal is pitched up 5° to the horizontal. The mirror has limited rotation around a vertical axis to properly redirect scattered beams for the inboard and outboard launch configurations.

The scattered beams exit the vacuum vessel through five water-free quartz windows. The thickness of the exit windows is optimized in the same manner as the entrance window. To protect detection equipment when the system is not in operation, shutters will be installed on the vacuum side of the exit windows.

D. Data Acquisition

A five-channel heterodyne detection system will be employed. The local oscillator will be phase locked to the carcinotron source at an intermediate frequency $IF = 880 \text{ MHz}$. The scattered signals will be mixed with the local oscillator and the resulting signals demodulated with the IF. Digitizers will record the demodulator output.

IV. SUMMARY

ETG modes may drive anomalous electron thermal transport in NSTX. A microwave scattering system will be deployed to directly observe ρ_e -scale fluctuations. The carcinotron source should provide adequate power to produce observable scattered signals. Inboard and outboard launch flexibility allow radial turbulent measurements in the range $|k_r| = 0 - 20 \text{ cm}^{-1}$. Good spatial resolution is achieved due to toroidal curvature.

Acknowledgments

The authors would like to thank R. Feder and C. Priniski for engineering support. This work was supported by the U.S. Department of Energy under contract numbers DE-AC02-76CH03073, DE-FG03-95ER54295, and DE-FG03-99ER54531.

* Electronic address: `drsmith@pppl.gov`

- ¹ W. Horton, B. Hong, and W. Tang, *Phys. Fluids* **31**, 2971 (1988).
- ² F. Jenko et al., *Phys. Plasmas* **7**, 1904 (2000).
- ³ W. Dorland et al., *Phys. Rev. Lett.* **85**, 5579 (2000).
- ⁴ W. Horton et al., *Phys. Plasmas* **7**, 1494 (2000).
- ⁵ G. Hoang et al., *Phys. Plasmas* **10**, 405 (2003).
- ⁶ M. Ono et al., *Nuc. Fusion* **40**, 557 (2000).
- ⁷ E. Synakowski et al., *Plasma Phys. Control. Fusion* **44**, A165 (2002).
- ⁸ B. LeBlanc et al., *Nuc. Fusion* **44**, 513 (2004).
- ⁹ C. Bourdelle et al., *Phys. Plasmas* **10**, 2881 (2003).
- ¹⁰ P. Devynck et al., *Plasma Phys. Controlled Fusion* **35**, 63 (1993).
- ¹¹ E. Mazzucato, *Phys. Plasmas* **10**, 753 (2003).
- ¹² H. Park, private communication.
- ¹³ M. Afsar and K. Button, *IEEE Trans. Microwave Theory Tech.* **31**, 217 (1983).

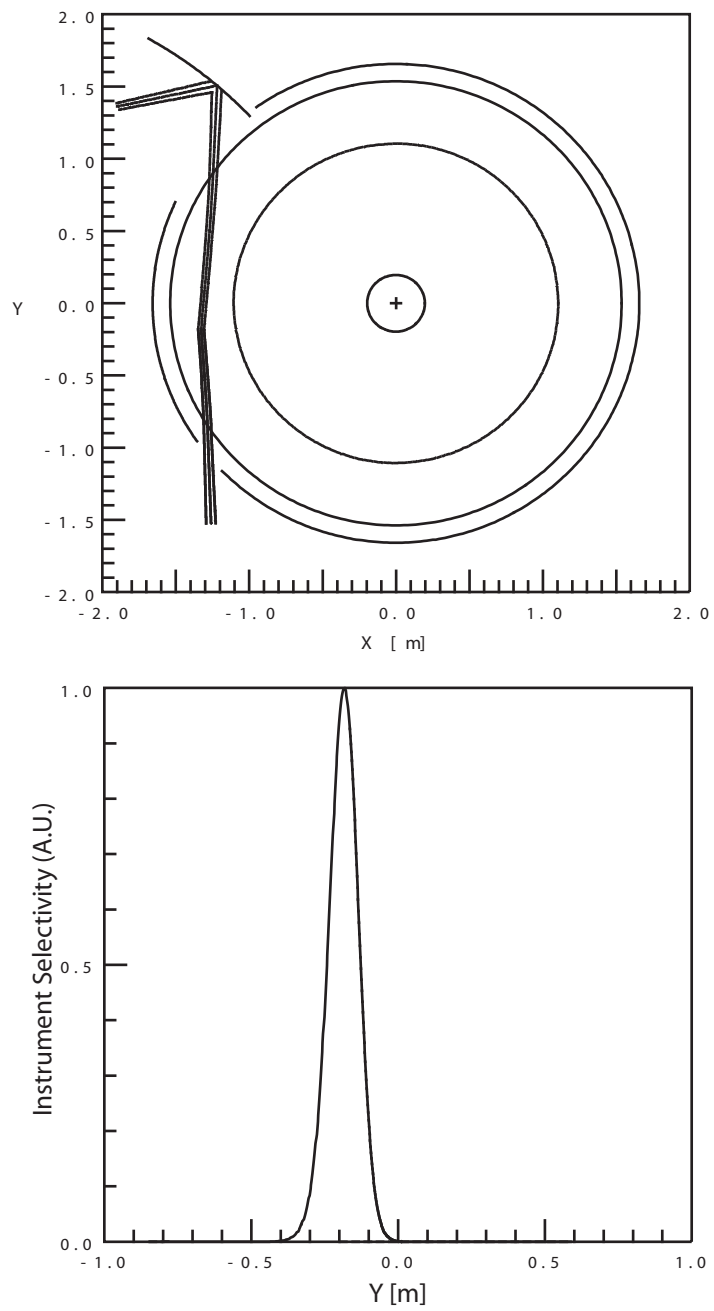


Figure 1: Instrument selectivity function for $k = 10 \text{ cm}^{-1}$.

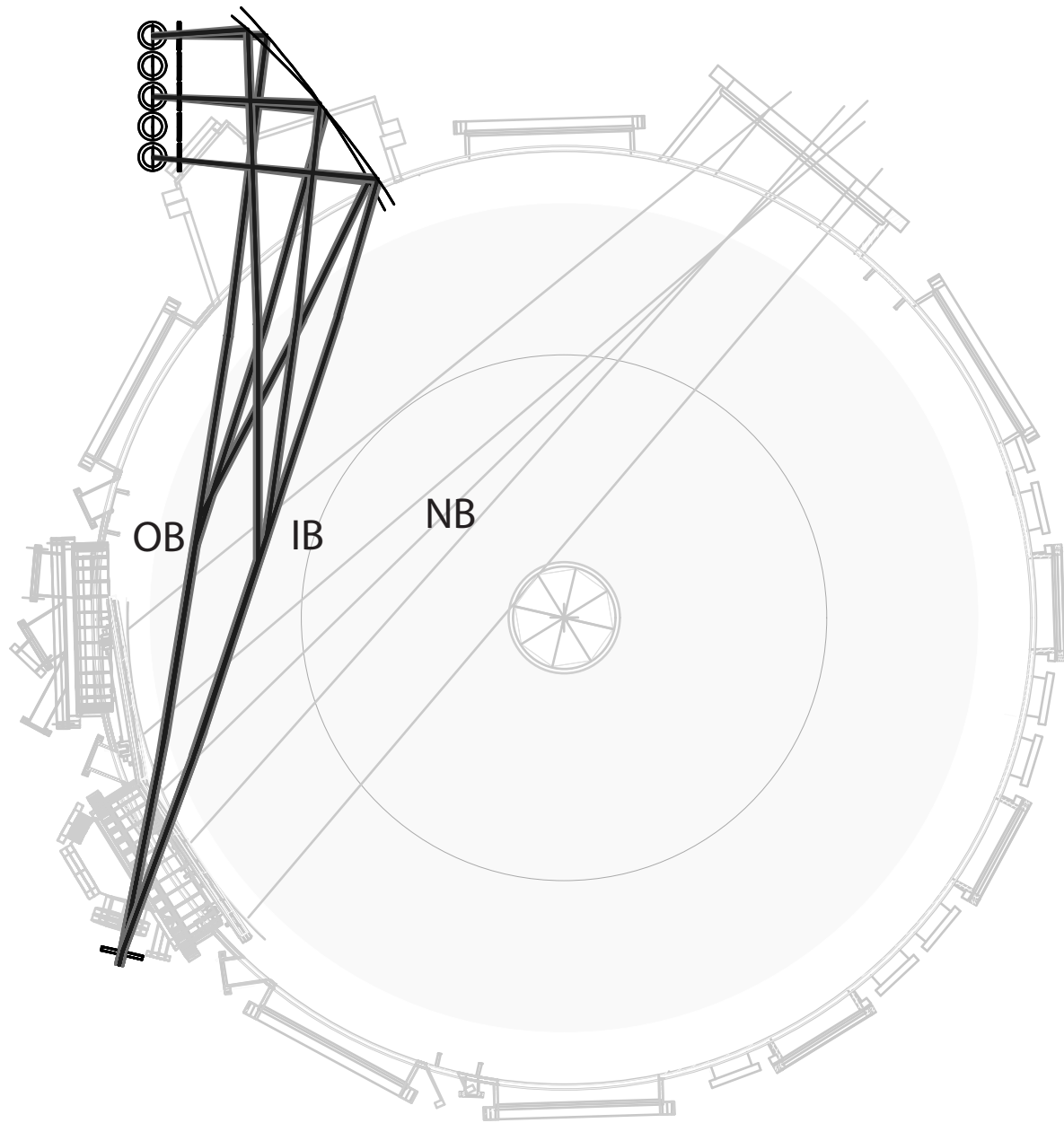


Figure 2: Overhead view of scattering system with inboard (IB) and outboard (OB) launch configurations and neutral beam sources (NB).

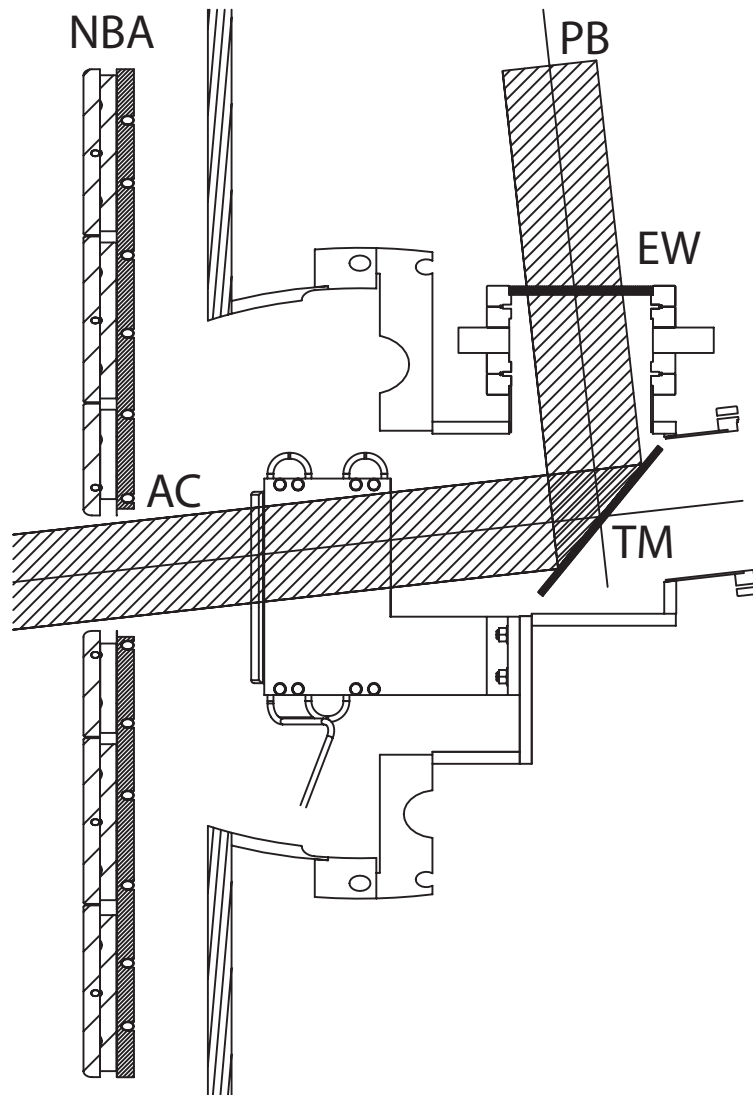


Figure 3: Launch port with probe beam (PB), entrance window (EW), turning mirror (TM), neutral beam armor (NBA), and neutral beam armor cut (AC). Plasma is to the left.

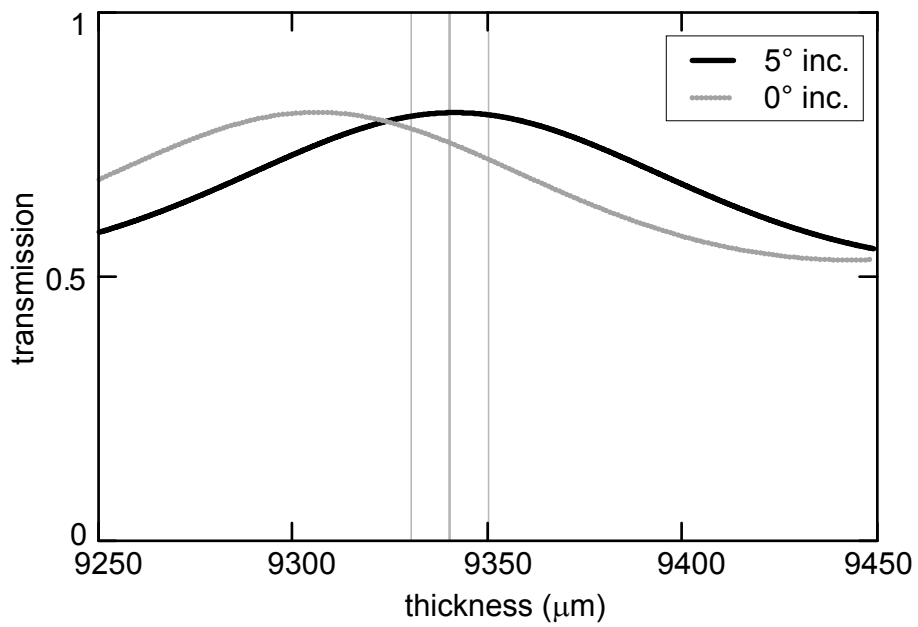


Figure 4: Etalon optimized transmittance vs. entrance window thickness for normal and 5° incident beams. Vertical lines correspond to manufacturer tolerance.

External Distribution

Plasma Research Laboratory, Australian National University, Australia
Professor I.R. Jones, Flinders University, Australia
Professor João Canalle, Instituto de Fisica DEQ/IF - UERJ, Brazil
Mr. Gerson O. Ludwig, Instituto Nacional de Pesquisas, Brazil
Dr. P.H. Sakanaka, Instituto Fisica, Brazil
The Librarian, Culham Laboratory, England
Mrs. S.A. Hutchinson, JET Library, England
Professor M.N. Bussac, Ecole Polytechnique, France
Librarian, Max-Planck-Institut für Plasmaphysik, Germany
Jolan Moldvai, Reports Library, Hungarian Academy of Sciences, Central Research Institute
for Physics, Hungary
Dr. P. Kaw, Institute for Plasma Research, India
Ms. P.J. Pathak, Librarian, Institute for Plasma Research, India
Ms. Clelia De Palo, Associazione EURATOM-ENEA, Italy
Dr. G. Grosso, Instituto di Fisica del Plasma, Italy
Librarian, Naka Fusion Research Establishment, JAERI, Japan
Library, Laboratory for Complex Energy Processes, Institute for Advanced Study,
Kyoto University, Japan
Research Information Center, National Institute for Fusion Science, Japan
Dr. O. Mitarai, Kyushu Tokai University, Japan
Dr. Jiengang Li, Institute of Plasma Physics, Chinese Academy of Sciences,
People's Republic of China
Professor Yuping Huo, School of Physical Science and Technology, People's Republic of China
Library, Academia Sinica, Institute of Plasma Physics, People's Republic of China
Librarian, Institute of Physics, Chinese Academy of Sciences, People's Republic of China
Dr. S. Mirnov, TRINITI, Troitsk, Russian Federation, Russia
Dr. V.S. Strelkov, Kurchatov Institute, Russian Federation, Russia
Professor Peter Lukac, Katedra Fyziky Plazmy MFF UK, Mlynska dolina F-2,
Komenskeho Univerzita, SK-842 15 Bratislava, Slovakia
Dr. G.S. Lee, Korea Basic Science Institute, South Korea
Institute for Plasma Research, University of Maryland, USA
Librarian, Fusion Energy Division, Oak Ridge National Laboratory, USA
Librarian, Institute of Fusion Studies, University of Texas, USA
Librarian, Magnetic Fusion Program, Lawrence Livermore National Laboratory, USA
Library, General Atomics, USA
Plasma Physics Group, Fusion Energy Research Program, University of California
at San Diego, USA
Plasma Physics Library, Columbia University, USA
Alkesh Punjabi, Center for Fusion Research and Training, Hampton University, USA
Dr. W.M. Stacey, Fusion Research Center, Georgia Institute of Technology, USA
Dr. John Willis, U.S. Department of Energy, Office of Fusion Energy Sciences, USA
Mr. Paul H. Wright, Indianapolis, Indiana, USA

The Princeton Plasma Physics Laboratory is operated
by Princeton University under contract
with the U.S. Department of Energy.

Information Services
Princeton Plasma Physics Laboratory
P.O. Box 451
Princeton, NJ 08543

Phone: 609-243-2750
Fax: 609-243-2751
e-mail: pppl_info@pppl.gov
Internet Address: <http://www.pppl.gov>